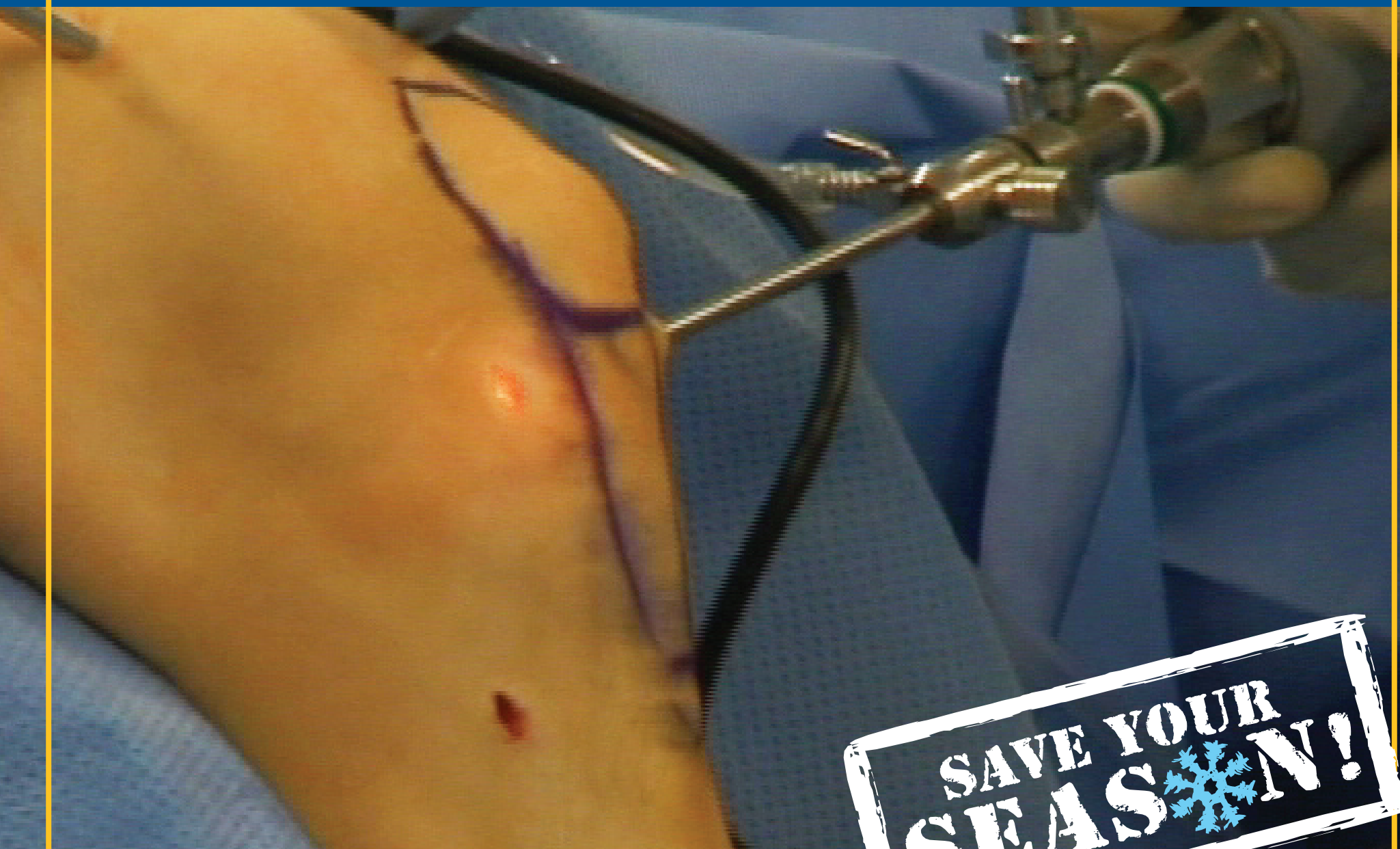


THIS COULD BE YOU!



Once torn, the ACL requires surgery

- ◆ Surgical instruments are maneuvered in the knee through “poke holes”
- ◆ A tunnel is made in the bone
- ◆ A new ligament graft is inserted and attached with screws

We knee'd you ... so ski safely!

ACLKT 03 09/07

PINNACOL
ASSURANCE

Colorado's choice for workers' compensation

1-800-873-7242 www.pinnacol.com